

---

# Bold on Early Educator Compensation Learning Community

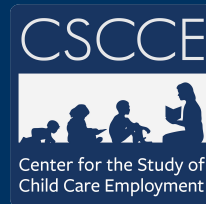
## Deep Dive: New Mexico Case Study

August 22, 2023

**Center for the Study of  
Child Care Employment**

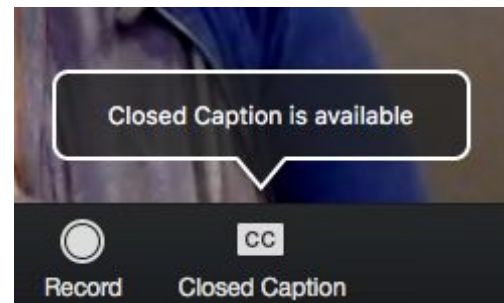
University of California, Berkeley

Questions? [adade@berkeley.edu](mailto:adade@berkeley.edu) | [cscce.berkeley.edu](http://cscce.berkeley.edu)



---

# Getting Settled



---

# Welcome!

Please share in chat

- Name
- Pronouns
- State
- Role/organization



---

# Today's Agenda

## Learning Community Convening #2

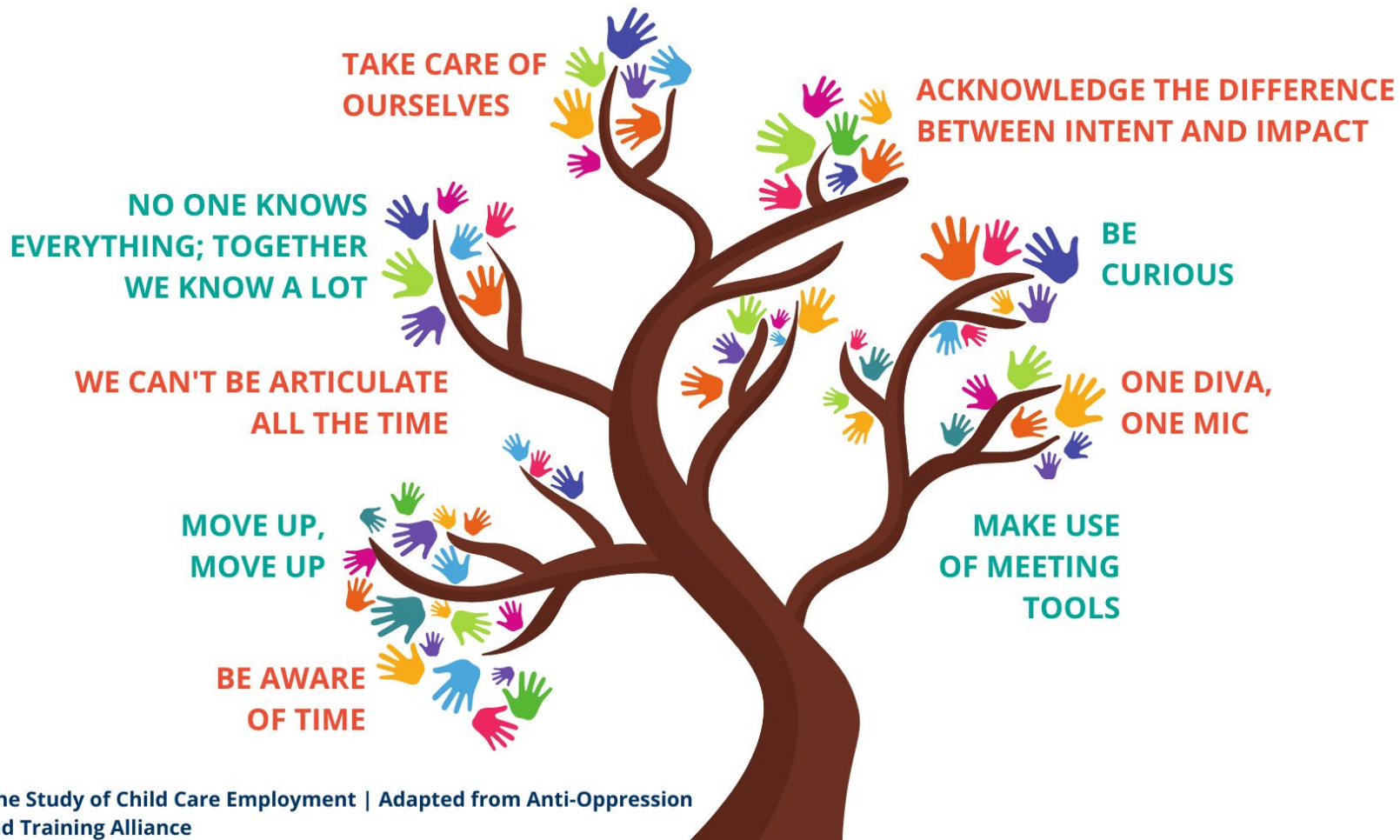
- **Getting to Know You**
- **New Mexico Panel & Discussion**

— *5 Minute Break* —

- **Group Activity**
- **Closing Reflections**

# COMMUNITY AGREEMENTS

updated 7.18.2023



## Breakout Room Icebreakers

- What is your favorite season?
- What is your favorite seasoning?



# New Mexico Case Study



Photo credit: Nathaniel Paolinelli/Vote Yes for Kids Campaign. [Source](#)





---

# Our Panelists:



**Matthew Henderson**

Executive Director of the OLÉ  
Education Fund



**Sara Mickelson**

Deputy Secretary, ECECD



**Ivydel Natachu**

Early educator, Early Childhood  
Education Leader OLÉ





# Break Time!

Let's resume in 5 minutes

# Community Share



*Tell us about wins, challenges, and  
questions from your state...*

**[LINK TO PADLET](#)**

---

# Next Steps

- **Listening Session**
  - Thursday September 7 at 10 am PT/ 1pm ET
  - Connect with panelists from New Mexico to ask questions and troubleshoot
    - *Please send your questions in advance*
- **Learning Community Convening #3**
  - Thursday, October 19 at 10 am PT / 1 pm ET
    - *Reminder: Invite an educator to join in*
- **Upcoming Case Study: North Carolina**

---

# Learning Community Resources

## Visit our webpage

- Resources from 2022
- Publications
- Upcoming case studies

## Stay in-touch!

- Learning Community Listserv
- CSCCE Newsletters



# Questions? Please reach out.

Annie Dade | [adade@berkeley.edu](mailto:adade@berkeley.edu)  
Caitlin McLean | [caitlin.mclean@berkeley.edu](mailto:caitlin.mclean@berkeley.edu)



# Thank you!

